



# HYDRAULIC BRAKE LINE KITS

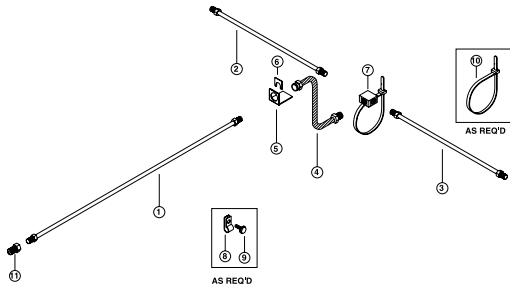
The standard hydraulic brake line kits listed below are designed to be used on trailers using either surge brake actuators or power brake actuators (vacuum/hydraulic, air/hydraulic or electric/hydraulic).

**We can custom design a brake line kit to your specifications. Please inquire.**

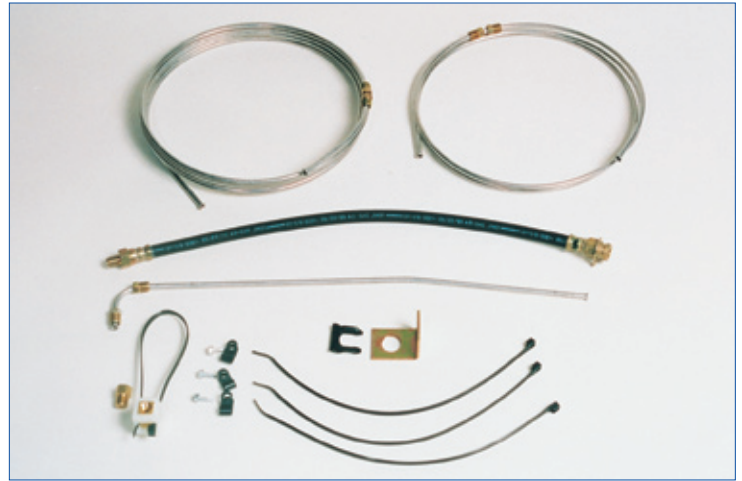
## Features

- All kits are supplied complete with hydraulic brake lines, brake hoses, hydraulic fittings and mounting hardware
- Manufactured using double wall brazed low carbon steel tubing in accordance with SAE J527
- Inverted flare tube nuts conform to SAE J512 and the flares are fabricated per SAE J533b
- All brake fluid carrying components meet the applicable SAE standard
- Drum or disk brake setup
- Leaf spring or torsion suspension
- Customized to your trailer design

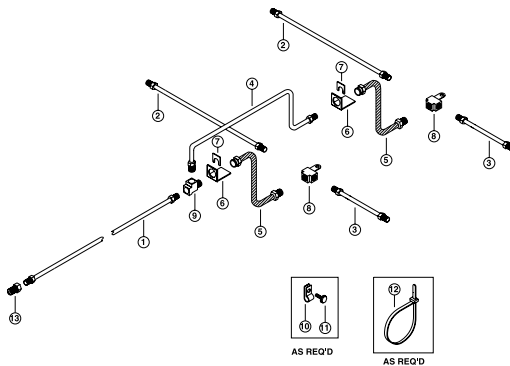
## SINGLE AXLE



## SINGLE AXLE



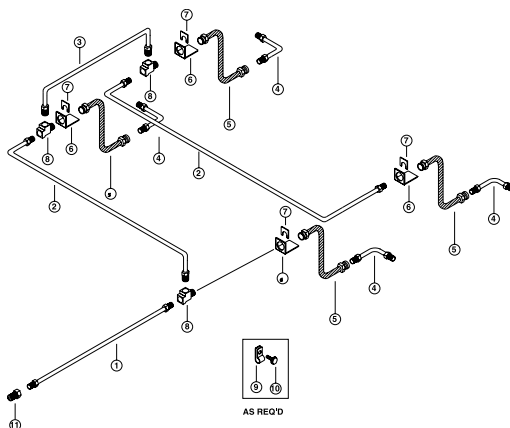
## TANDEM AXLE



## TANDEM AXLE



## TANDEM TORSION AXLE

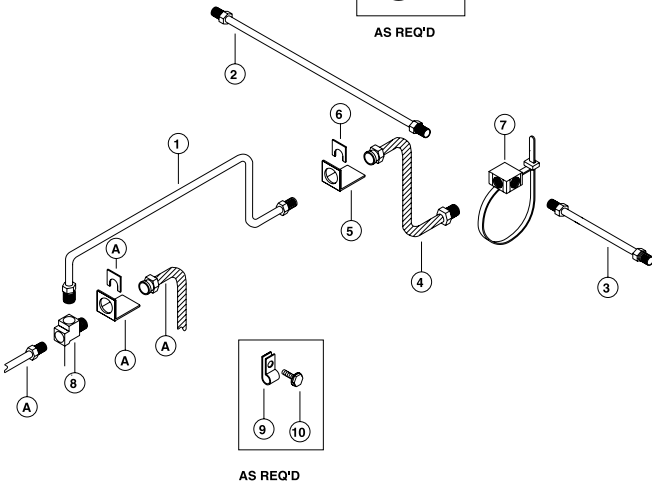
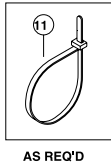
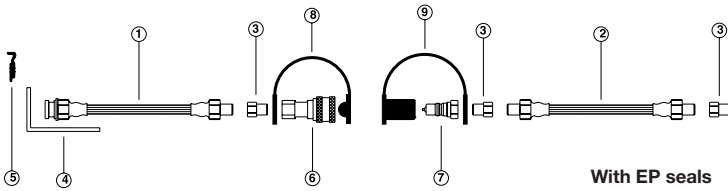


## TANDEM TORSION AXLE

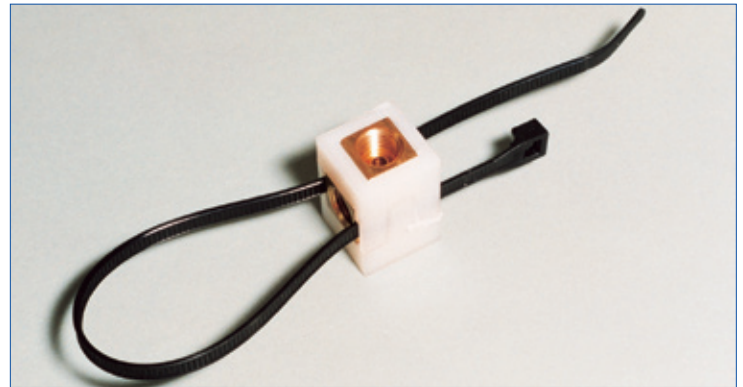




# HYDRAULIC BRAKE LINE KITS



**QUICK DISCONNECT KIT**



**#8032 AXLE TEE W/STRAP**

## TUBING FABRICATION

BLUDOT hydraulic brake lines are manufactured using double wall brazed low carbon steel tubing in accordance with SAE J527. The inverted flare tube nuts conform to SAE J512 and the flares are fabricated per SAE J533b. The standard OD finish for our hydraulic brake line assemblies is Aluminum Galfan (AG). This finish provides extended corrosion and abrasion resistance by combining a hot dip coat of the alloy Galfan with an aluminum rich epoxy top coat.

The following table provides a guide in selecting the O.D., finish and lengths that can be supplied for a specific application.

O.D. X WALL THICKNESS	FINISH	LENGTH
3/16" x .028	Aluminum/Galfan Stainless Steel	4" - 25'
1/4" x .028	Aluminum/Galfan	4" - 24'

SYMBOL	TUBING TYPE	CORROSION RESISTANCE
AG	Aluminum/Galfan Coated	Excellent
SS	Stainless Steel	Best

